



GLOW
streetlamps



A nighttime cityscape featuring a road illuminated by green streetlights. The road curves through the city, with light trails from vehicles. In the background, there are tall buildings and a body of water. The overall scene is dark, with the green lights providing a focal point.

Give your journey the green light...

...for wherever the road takes you

GLOW
streetlamps





The image features a dynamic, abstract background of green and yellow light rays radiating from the center. In the middle, there is a stylized graphic of a modern building with a green and yellow facade. Above the building, the text 'VECTOR WORLD' is written in a curved path. Below the building, the words 'GREEN CITY' are prominently displayed in a bold, white, sans-serif font with a black outline. The graphic is surrounded by various circular and geometric shapes, including a large white circle with a green center, and a cluster of smaller green and white circles at the bottom right.

GREEN CITY

Disclaimer

The content contained in this presentation is for information purposes and does not constitute an official ruling, decision or action as it relates to the technology, products and services featured in this presentation. Nor should the information in anyway be construed as legal, financial and technical advice.

The use of the information is at the discretion of the reader and no liability shall be accepted by GREENCITY VENTURES CORPORATION. in the event of its use. Readers are advised to seek the third party advice, before taking any action based on the information contained in this presentation. The information contained herein is proprietary with supporting material obtained in the public domain.

This presentation may also contain forward-looking statements that may or may not be fully realized.

Further clarification may be obtained upon written request only.



80% of all energy being delivered into urban communities comes from non renewable energy sources and relies on a main power grid to facilitate power.



This DRAINS the life out of our Earth.



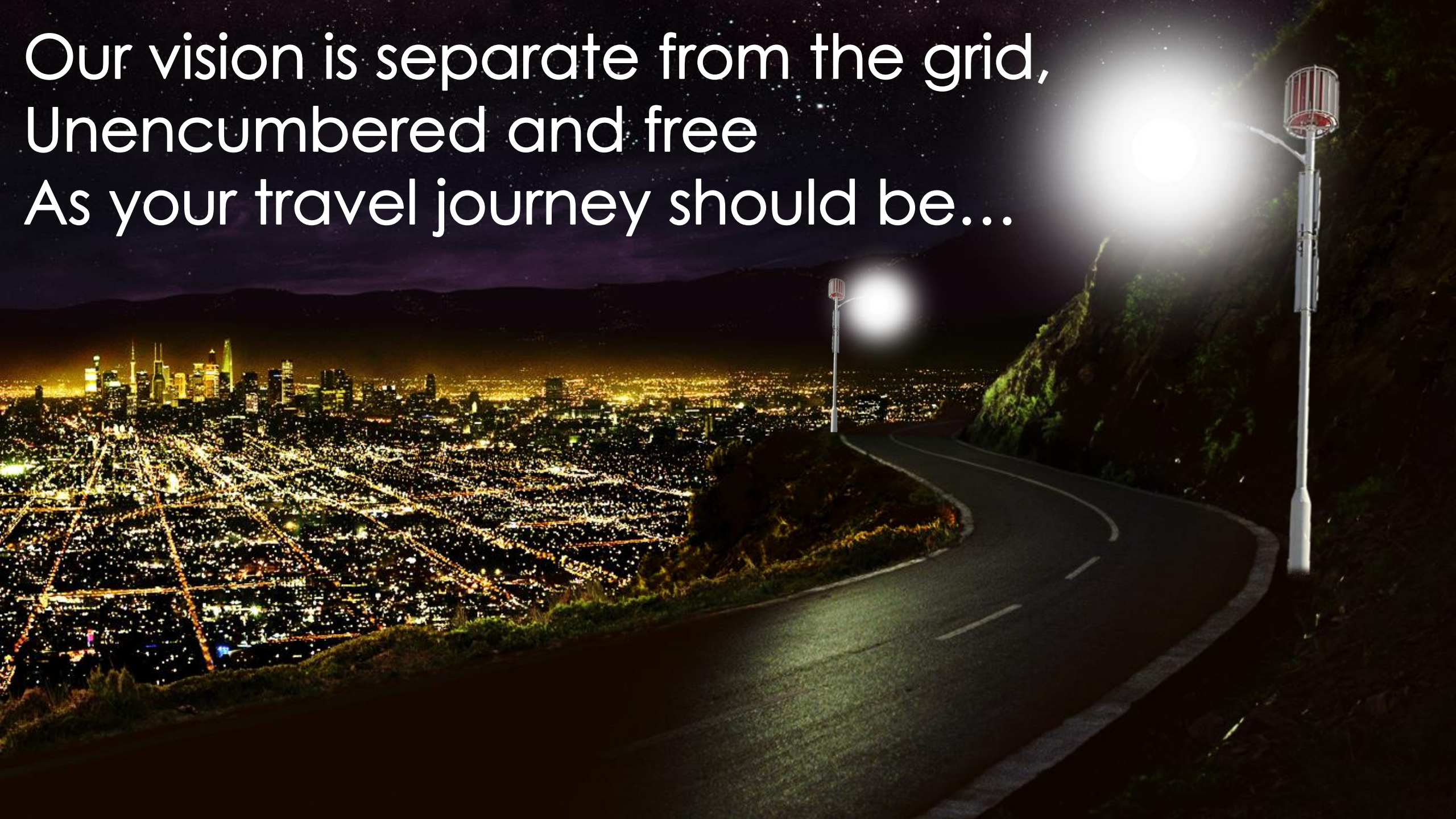
Like a snap shot,
We capture the
natural, renewable
energy sources
the Earth has
to offer; wind
and solar



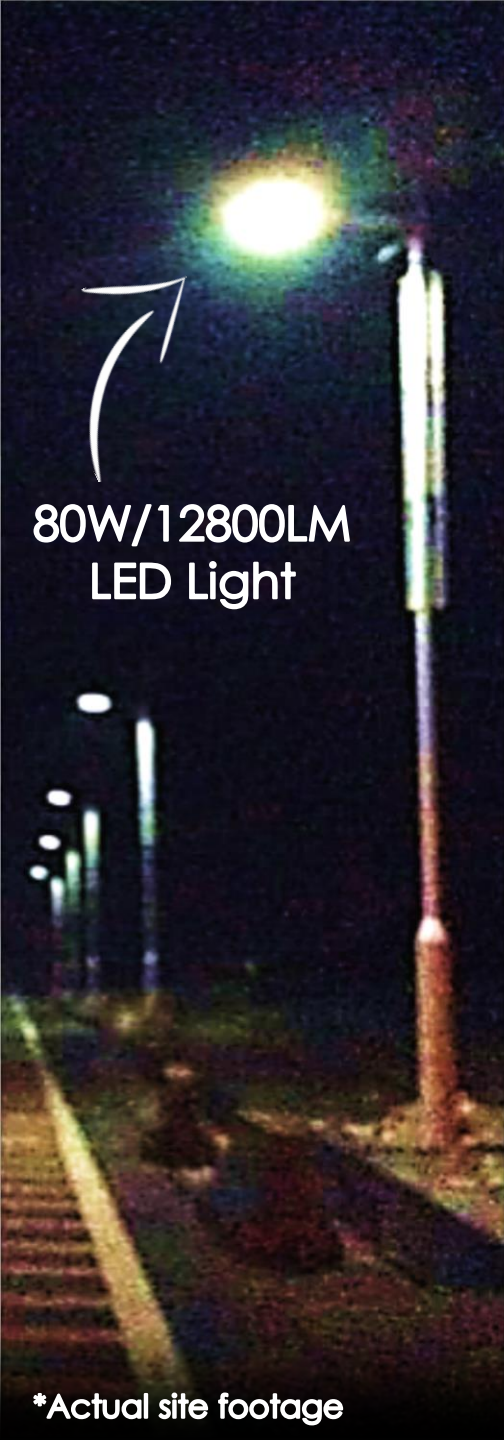
This PRESERVES the life of our earth.



Our vision is separate from the grid,
Unencumbered and free
As your travel journey should be...



100% Self Sustainable Renewable energy powered LED street lights



80W/12800LM
LED Light



*Actual site footage

Solar and wind Power Combination



eLOW
streetlamps

Daytime Energy Generation



*Actual site footage

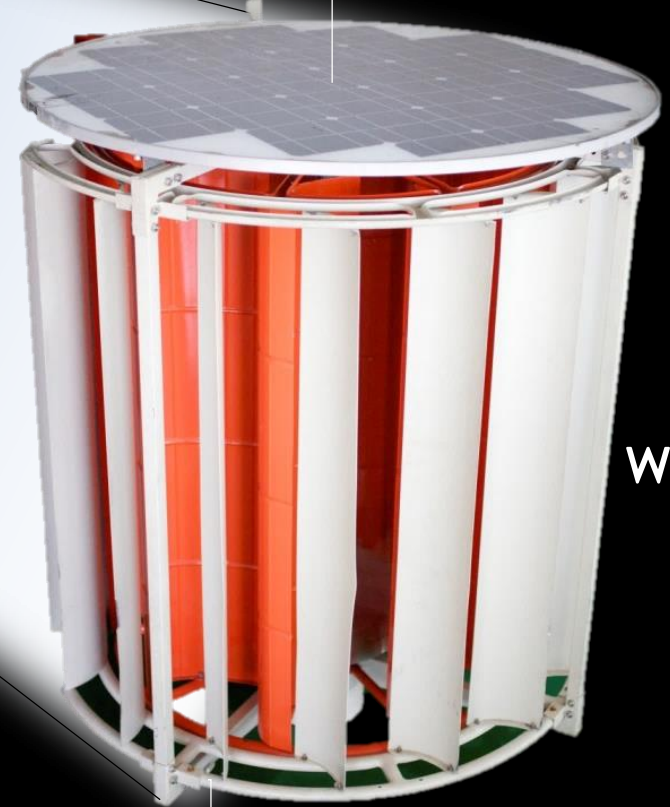
*Actual site footage

GLOW
streetlamps

Solar Panel Pole 10M

Energy Capture Component

Solar Panel Plate
308W total solar



150W
Wind Turbine

30A/600W
Energy Controller



GLOW Detailed Specifications

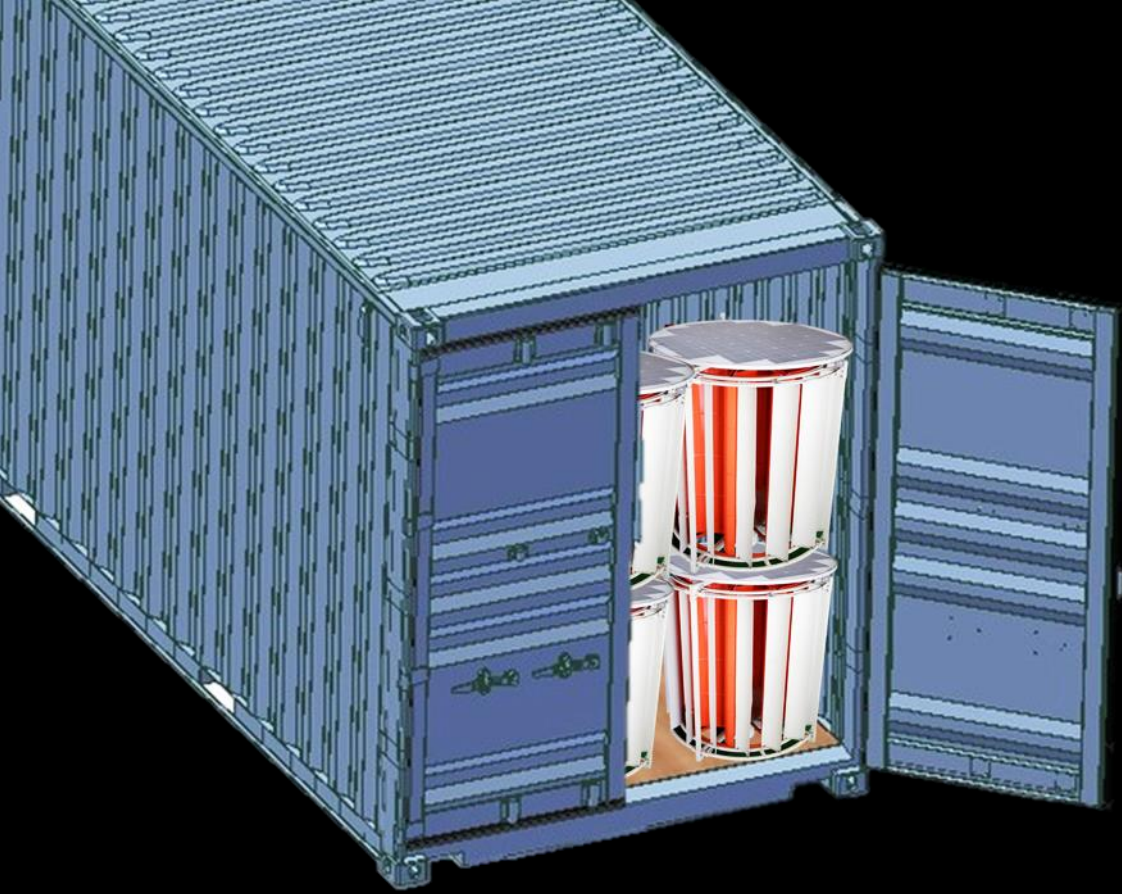


*Actual site footage

Detailed specification

Rated power	150W
quantity of blades	25pcs
Max power	180W
blade diameter	0.85m
blade material	Alumium alloy
output voltage	DC24V
start-up wind speed	0.5m/s
rated wind speed	10m/s
cut-in wind speed	1.2m/s
cut-out wind speed	45m/s
rated revolution(rpm)	150rpm
weight(except tower)	30kgs
wind turbine dimension	Diameter 0.85m*height 0.9m

Shipping and Freight



- Giving out light for 365 days a year.
- Can utilizing wind from any directions; and do not need complicated wind system.
- High security and reliability; resist to 12 level hurricane.
- Without digging trenches; without laying transmission line.
- Intelligent control system; no troublesome operations; easy to install.
- Convenient maintenance; low cost; no electricity expenses.
- No danger from fire or electric shock; green; environmental friendly; energy saving.

Standard ISO 40' shipping container will fit about 28 set of 80W exoWIND solar hybrid street lamp, including: controller, lamp, battery pole all together.





CE certifications: ISO9001, ISO14001, ISO18001 certifications and passed the detection and identification by Shanghai Institute of Quality Inspection and Technical Research (SQI), University of Hong Kong and Shanghai Science and Technology Novelty Search Consultation Center of Chinese Academy of Science, the results of which rank top in the world. Our vertical axis wind turbine (VAWT) features low start-up wind speed and is 30% more efficient than traditional wind turbine. Furthermore, our VAWT is easy to install and requires little maintenance. It's safe, noise-free and environmental-friendly structure causes no harm to the birds.

Product Advantages

- World first and only uniquely designed with 16 pieces of air deflectors in outer ring and 9 pieces in inner circle, the unique turbine structure makes effective use of turbulence and suitable for installing in city.
- Start up wind speed is 1.8m/s, which is far less than similar product in current market.
- Strong wind resistance: The turbine system functions well without being damaged at the wind speed of 45m/s. Easy to install, little maintenance.
- The wind turbine causes no safety threat to outside environment when the inner circle is operating.
- Cut-in wind speed is 2.5m/s, which is far less than similar product in current market.
- Our wind turbine is designed with 16 pieces of air deflectors, which enhances its efficiency by 30% compared to traditional wind turbine, especially at low wind speed.
- Superposed combination: by adopting special structural design, the wind turbines can be superposed vertically, thus doubling output and save the land. 5pcs of 1kw wind turbine can be superposed vertically to get a 5kw turbine output.
- Land conservation: The wind turbines can be placed in rhombus layout for better space saving. The distance between two VAWT is only 1.5 times of its diameter.
- As the first intelligent wind solar hybrid MPPT energy manager, it integrates efficient LED driver, wind and solar MPPT tracking systems. The brand-new design concept and open method of user-level application configuration equip the manager with wider application and precision control of input and output of energy. Continuous output time is lengthened to the greatest extent, which plays a crucial role in the application of wind solar hybrid streetlight projects.



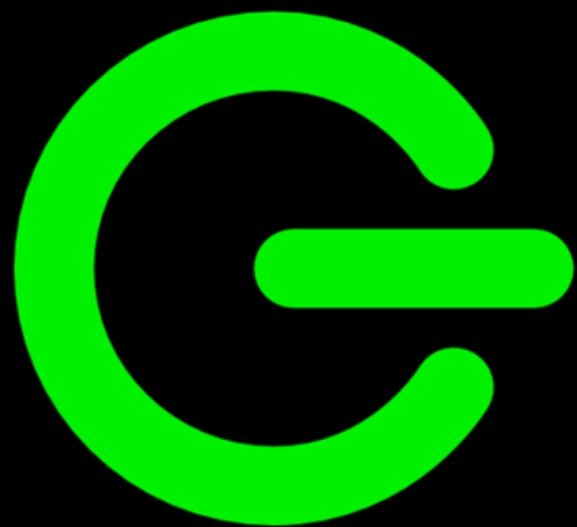
*Actual site footage

Our Earth is running out of life and color...



... So let's paint the world green one street at a time and light the path to a better future.

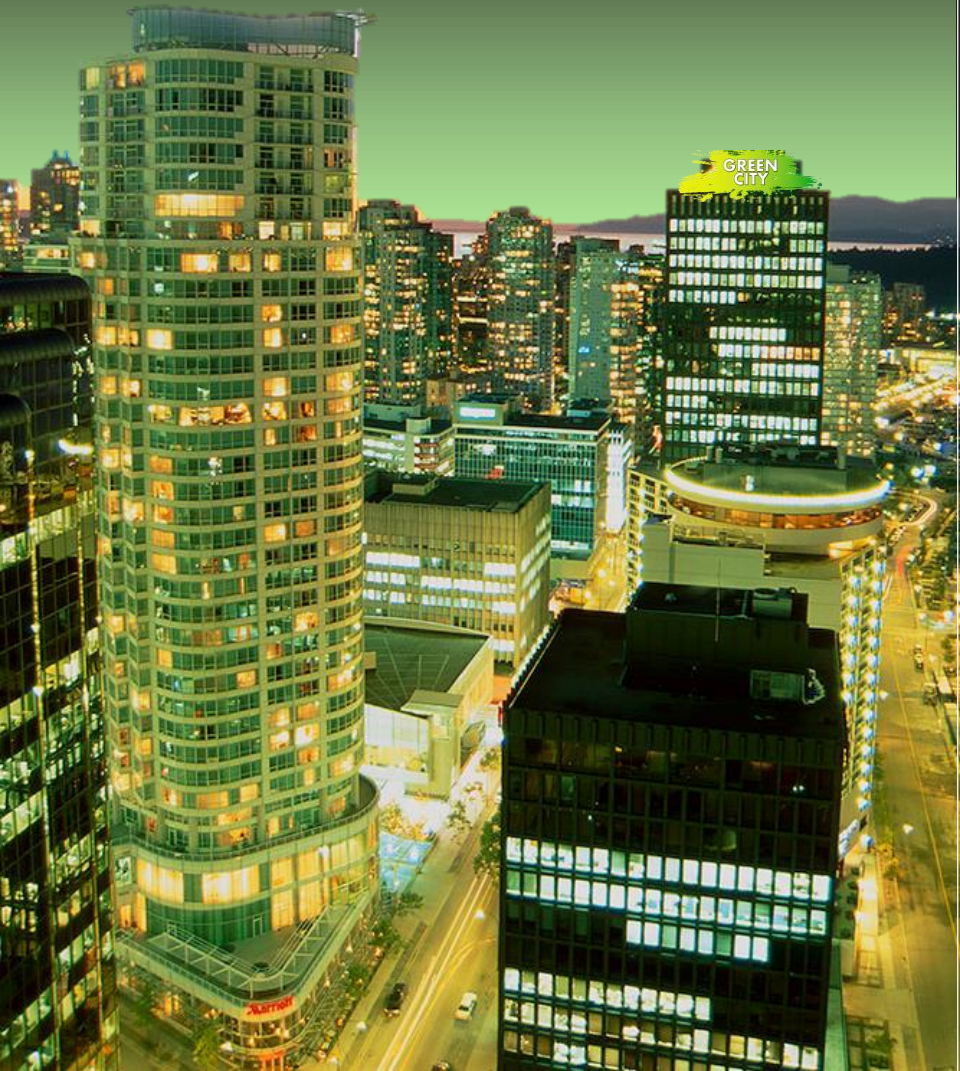




GLOW

streetlamps

Thank You

A graphic for the Green City logo, featuring a stylized, glowing green and yellow brushstroke background. The words "GREEN CITY" are written in white, bold, sans-serif capital letters over the brushstroke.

**GREEN
CITY**

Mr. Curtis MEARNS

Chief Executive Officer

GREENCITY VENTURES CORPORATION

Phone: 604-441-9803

curtismearns@shaw.ca

www.GREENCITYVENTURES.com